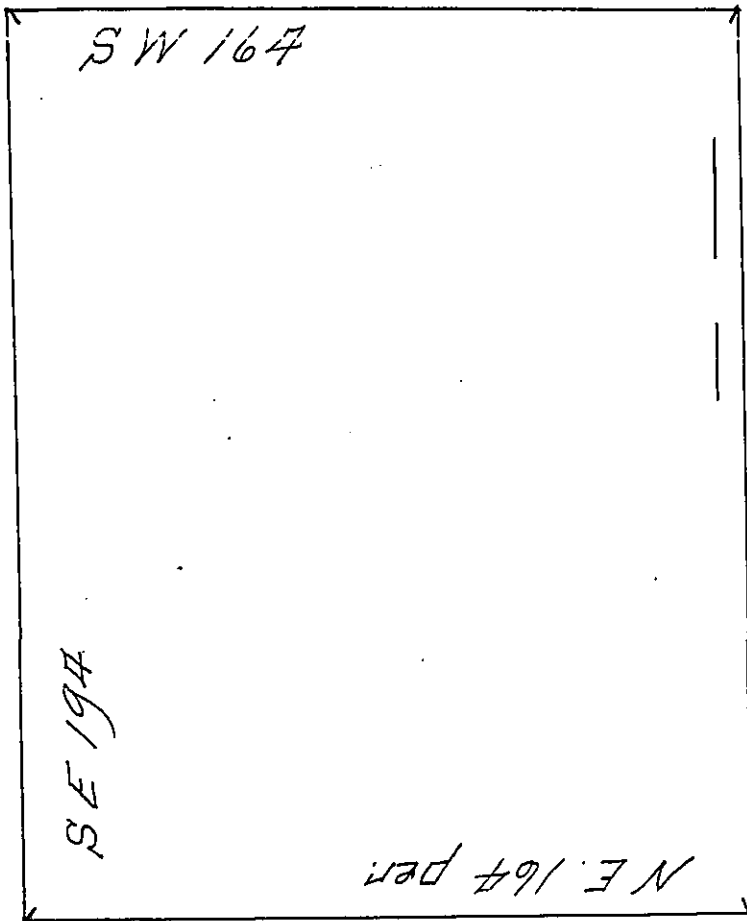


Bebbers Township

Abraham Mackrell

130

64 Vacant



Telmers Township

John Pawliss Land

Laid out to James Robins a Certain^{County of} Tract of Land in the Philadelphia
 begins at a black oak being a Corner of John Pawliss
 Land Thence by the Same N.E 164 to a post a Corner
 of Ab^m Mackrells Land thence South East 134 by Vacant
 Land 64 to a post In the line of Bebbers Township
 thence by the said Township South west ~~by~~ 164 to a post
 thence by Telmers Township North West 194 perches
 to the place of beginning of 180 Acres with allowance
 of Six ^{per} Cent Survey

Obliterated

Obliterated

IN TESTIMONY that the above is a copy of the original remaining on file in
 the Department of Internal Affairs of Pennsylvania, made
 conformably to an Act of Assembly approved the 16th day of
 February, 1833, I have hereunto set my Hand and caused
 the Seal of said Department to be affixed at Harrisburg,
 this sixth day of July 1910

Henry Horner
 Secretary of Internal Affairs.